

# Talsu novada pilsētu un pagastu piktogrammas

Pilsētu un pagastu piktogrammas balstītas heraldikas ģerboņos un ieguvušas mūsdienīgu veidolu.

Visas piktogrammas, tāpat kā logo, ietilpst kvadrātveida rāmī.

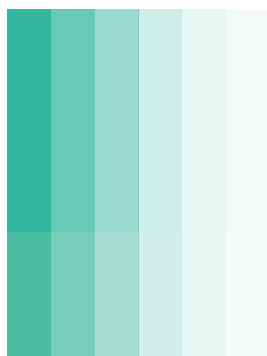


Talsi

## Pamatkrāsa un tās gaišinātie toņi

**PANTONE – Green C**  
CMYK – 100 / 0 / 65 / 0  
RGB – 0 / 168 / 135  
Website – #009999  
HEX – #00A887  
NCS S – 2060-B70G  
RAL – 6024  
Limplēve – 532 Kelly  
Green Avery© 500

**PANTONE – 339 U**  
CMYK – 78 / 6 / 60 / 0  
RGB – 25 / 172 / 138  
HEX – #19AC8A



## Papildkrāsa

**PANTONE – 3292 C**  
CMYK – 100 / 42 / 67 / 33  
RGB – 0 / 88 / 80  
Website – #006666  
HEX – #005850  
NCS S – 4550-B40G  
RAL – 6016  
Limplēve – 533 Forest  
Green Avery© 500

**PANTONE – 3292 U**  
CMYK – 81 / 41 / 54 / 19  
RGB – 51 / 108 / 106  
HEX – #336C6A

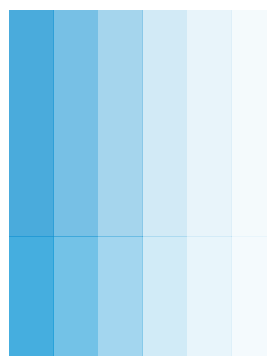
Talsi



Abava

**PANTONE – 2925 C**  
CMYK – 76 / 25 / 0 / 0  
RGB – 0 / 155 / 222  
Website – #0099CC  
HEX – #009BDE  
NCS S – 1060-B  
RAL – 5015  
Limplēve – 538 Gentian  
Blue Avery© 5008

**PANTONE – 2995 U**  
CMYK – 76 / 24 / 0 / 0  
RGB – 0 / 156 / 219  
HEX – #009CDB



**PANTONE – 294 C**  
CMYK – 100 / 86 / 29 / 22  
RGB – 0 / 46 / 109  
Website – #003366  
HEX – #002E6D  
NCS S – 4550-R80B  
RAL – 5005  
Limplēve – 520  
Ultramarine Blue  
Avery© 5008

**PANTONE – 280 U**  
CMYK – 89 / 80 / 21 / 7  
RGB – 60 / 73 / 129  
HEX – #3C4981

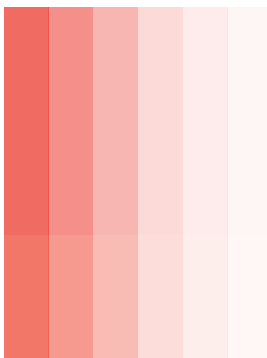
Abavas  
pagasts



Valdgale

**PANTONE – Warm Red C**  
CMYK – 0 / 87 / 80 / 0  
RGB – 255 / 68 / 56  
Website – #FF3333  
HEX – #FF4438  
NCS S – 1070-Y70R  
RAL – 3028  
Limplēve – 514 Poppy Red  
Avery© 500

**PANTONE – Bright Red U**  
CMYK – 0 / 82 / 76 / 0  
RGB – 255 / 84 / 64  
HEX – #FF5440



**PANTONE – 193 C**  
CMYK – 16 / 100 / 77 / 5  
RGB – 198 / 9 / 59  
Website – #CC0033  
HEX – #C6093B  
NCS S – 1080-R  
RAL – 3027  
Limplēve – 519 Red  
Avery© 500

**PANTONE – 206 U**  
CMYK – 7 / 90 / 47 / 0  
RGB – 224 / 66 / 100  
HEX – #E04264

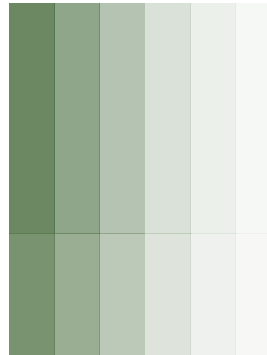
Valdgales  
pagasts



Balgale

**PANTONE – 7743 C**  
CMYK – 74 / 37 / 89 / 27  
RGB – 66 / 104 / 60  
Website – #336633  
HEX – #42683C  
NCS S – 5020-G10Y  
RAL – 6025  
Limplēve – 533 Forest  
Green Avery© 500

**PANTONE – 364 U**  
CMYK – 67 / 34 / 80 / 18  
RGB – 90 / 120 / 77  
HEX – #5A784D



**PANTONE – 382 C**  
CMYK – 30 / 1 / 100 / 0  
RGB – 194 / 213 / 0  
Website – #CCCC00  
HEX – #C2D500  
NCS S – 1075-G60Y  
RAL – 1012  
Limplēve – 517 Light  
Green Avery© 500

**PANTONE – 389 U**  
CMYK – 33 / 0 / 100 / 0  
RGB – 185 / 219 / 1  
HEX – #B9DB01

Balgales  
pagasts

## Pamatkrāsa un tās gaišinātie toņi

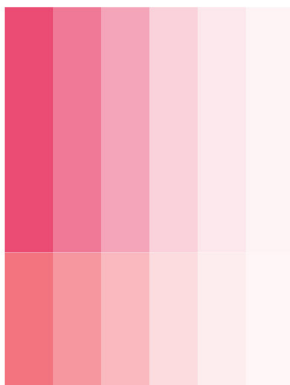
## Papildkrāsa



Valdemārpils

**PANTONE – 1925 C**  
CMYK – 2 / 100 / 62 / 0  
RGB – 233 / 0 / 76  
Website – #FF0033  
HEX – #E7004C  
NCS S – 0580-Y90R  
RAL – 3018  
Līmplēve – 503 Geranium  
Red Avery© 500

**PANTONE – 072 U**  
CMYK – 0 / 84 / 55 / 0  
RGB – 247 / 80 / 94  
HEX – #F7505E



**PANTONE – 221 C**  
CMYK – 31 / 100 / 53 / 20  
RGB – 151 / 0 / 72  
Website – #990033  
HEX – #970048  
NCS S – 2065-R20B  
RAL – 4002  
Līmplēve – 513 Burgundy  
Avery© 500

**PANTONE – 207 U**  
CMYK – 16 / 94 / 42 / 1  
RGB – 204 / 51 / 102  
HEX – #B44B64

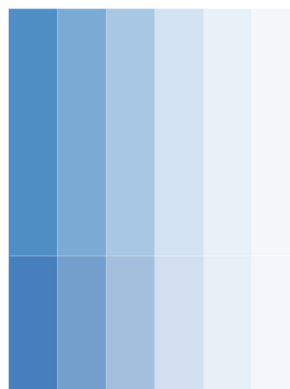
## Valdemārpils



Laidze

**PANTONE – 285 C**  
CMYK – 91 / 53 / 0 / 0  
RGB – 0 / 113 / 206  
Website – #0066CC  
HEX – #0071CE  
NCS S – 2060-R90B  
RAL – 5019  
Līmplēve – Bright Blue  
Avery© 500

**PANTONE – 2935 U**  
CMYK – 93 / 67 / 1 / 0  
RGB – 19 / 94 / 171  
HEX – #135EAB



**PANTONE – 298 C**  
CMYK – 64 / 10 / 1 / 0  
RGB – 64 / 180 / 229  
Website – #33CCCC  
HEX – #40B4E5  
NCS S – 1050-B10G  
RAL – 6012  
Līmplēve – 537 Light Blue  
Avery© 500

**PANTONE – 2985 U**  
CMYK – 64 / 9 / 1 / 0  
RGB – 63 / 182 / 232  
HEX – #3FB6E8

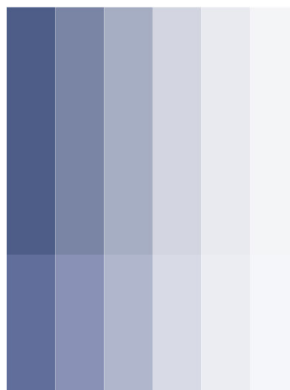
## Laidzes pagasts



Kūļciems

**PANTONE – 294 C**  
CMYK – 100 / 86 / 29 / 22  
RGB – 0 / 46 / 109  
Website – #003366  
HEX – #002E6D  
NCS S – 1060-B  
RAL – 5022  
Līmplēve – 520  
Ultramarine Blue

**PANTONE – 280 U**  
CMYK – 89 / 80 / 21 / 7  
RGB – 60 / 73 / 129  
HEX – #3C4981



**PANTONE – 2925 C**  
CMYK – 76 / 25 / 0 / 0  
RGB – 0 / 155 / 222  
Website – #003366  
HEX – #009BDE  
NCS S – 1060-B  
RAL – 5012  
Līmplēve – 537 Light Blue  
Avery© 500

**PANTONE – 2995 U**  
CMYK – 76 / 24 / 0 / 0  
RGB – 0 / 156 / 219  
HEX – #009CDB

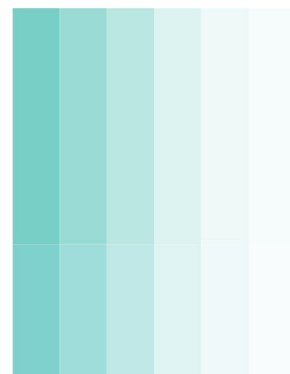
## Kūļciema pagasts



Ārlava

**PANTONE – 333 C**  
CMYK – 62 / 0 / 34 / 0  
RGB – 46 / 217 / 195  
Website – #33CCCC  
HEX – #2ED9C3  
NCS S – 1050-B40G  
RAL – 6027  
Līmplēve – 536 Mint  
Avery© 500

**PANTONE – 3245 U**  
CMYK – 59 / 0 / 29 / 0  
RGB – 68 / 217 / 203  
HEX – #44D9CB



**PANTONE – 634 C**  
CMYK – 100 / 55 / 33 / 13  
RGB – 0 / 93 / 131  
Website – #006699  
HEX – #005D83  
NCS S – 3060-B  
RAL – 5021  
Līmplēve – 534 Turquoise  
Avery© 500

**PANTONE – 115 U**  
CMYK – 90 / 61 / 23 / 5  
RGB – 36 / 97 / 142  
HEX – #24618E

## Ārlavas pagasts

## Pamatkrāsa un tās gaišinātie toņi

## Papildkrāsa



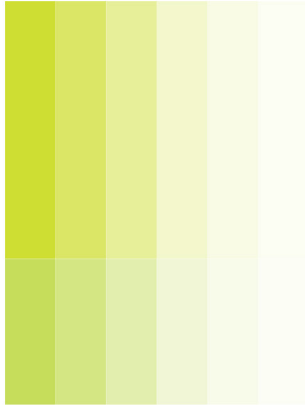
Īve

### PANTONE – 382 C

CMYK – 30 / 1 / 100 / 0  
RGB – 194 / 213 / 0  
Website – #CCCC00  
HEX – #C2D500  
NCS S – 1075-G60Y  
RAL – 1019  
Līmplēve – 531 Lime  
Avery© 500

### PANTONE – 389 U

CMYK – 33 / 0 / 100 / 0  
RGB – 185 / 219 / 1  
HEX – #B9DB01



### PANTONE – 7743 C

CMYK – 74 / 37 / 89 / 27  
RGB – 66 / 104 / 60  
Website – #336633  
HEX – #42683C  
NCS S – 5020-G10Y  
RAL – 6025  
Līmplēve – 518 Grass  
Green Avery© 500

### PANTONE – 364 U

CMYK – 67 / 34 / 80 / 18  
RGB – 90 / 120 / 77  
HEX – #5A784D

Īves  
pagasts



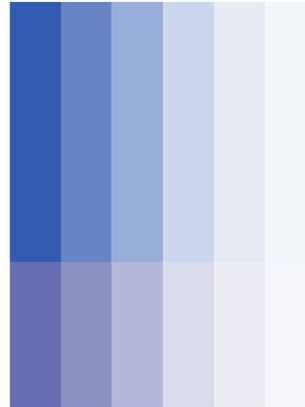
Ģibuļi

### PANTONE – 286 C

CMYK – 100 / 84 / 11 / 3  
RGB – 0 / 51 / 160  
Website – #003399  
HEX – #0033A0  
NCS S – 3060-R80B  
RAL – 5017  
Līmplēve – 539 Reflex  
Blue Avery© 500

### PANTONE – 072 U

CMYK – 88 / 83 / 0 / 0  
RGB – 59 / 68 / 172  
HEX – #3B44AC



### PANTONE – 7406 C

CMYK – 6 / 22 / 100 / 0  
RGB – 245 / 196 / 0  
Website – #FFCC00  
HEX – #F5C400  
NCS S – 1070-Y10R  
RAL – 1021  
Līmplēve – 527 Butter  
Yellow Avery© 500

### PANTONE – 115 U

CMYK – 0 / 20 / 88 / 0  
RGB – 255 / 206 / 45  
HEX – #FFCE2D

Ģibuļu  
pagasts



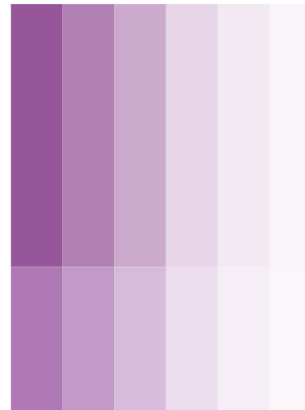
Sabile

### PANTONE – 2612 C

CMYK – 63 / 100 / 11 / 2  
RGB – 124 / 37 / 130  
Website – #663399  
HEX – #7C2582  
NCS S – 3050-R40B  
RAL – 4008  
Līmplēve – 522 Violet  
Avery© 500

### PANTONE – 2602 U

CMYK – 44 / 78 / 0 / 0  
RGB – 153 / 87 / 165  
HEX – #9957A5



### PANTONE – 233 C

CMYK – 19 / 100 / 14 / 0  
RGB – 204 / 0 / 123  
Website – #CC0066  
HEX – #CC007B  
NCS S – 2060-R20B  
RAL – 4010  
Līmplēve – 524 Magenta  
Avery© 500

### PANTONE – Pink U

CMYK – 11 / 89 / 9 / 0  
RGB – 215 / 65 / 140  
HEX – #D7418C

Sabile



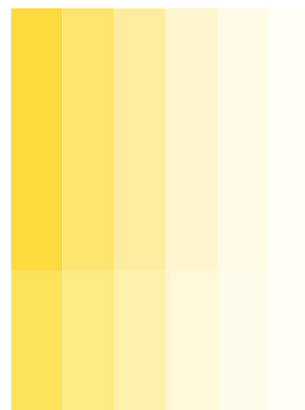
Vandzene

### PANTONE – 116 C

CMYK – 0 / 18 / 100 / 0  
RGB – 255 / 206 / 0  
Website – #FFCC00  
HEX – #FFCE00  
NCS S – 0580-Y  
RAL – 1023  
Līmplēve – 527 Butter  
Yellow Avery© 500

### PANTONE – 108 U

CMYK – 0 / 12 / 87 / 0  
RGB – 255 / 220 / 50  
HEX – #FFDC32



### PANTONE – 7564 C

CMYK – 11 / 51 / 100 / 1  
RGB – 223 / 138 / 0  
Website – #CC9933  
HEX – #DF8A00  
NCS S – 2070-Y20R  
RAL – 1007  
Līmplēve – 516 Light  
Orange Avery© 500

### PANTONE – 7408 U

CMYK – 3 / 44 / 98 / 0  
RGB – 240 / 156 / 34  
HEX – #F09C22

Vandzenes  
pagasts

## Pamatkrāsa un tās gaišinātie toņi

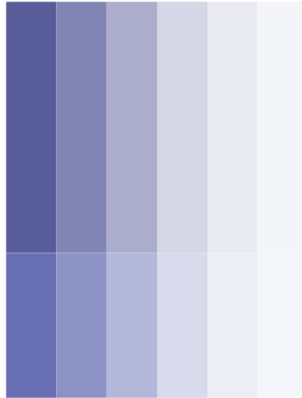
## Papildkrāsa



Lube

**PANTONE – 2735 C**  
CMYK – 97 / 100 / 8 / 10  
RGB – 41 / 0 / 136  
Website – #3330099  
HEX – #290088  
NCS S – 5040-R60B  
RAL – 5002  
Līmplēve – 528 Vivid Blue  
Avery© 500

**PANTONE – 072 U**  
CMYK – 88 / 83 / 0 / 0  
RGB – 59 / 68 / 172  
HEX – #3B44AC



**PANTONE – 375 C**  
CMYK – 46 / 0 / 100 / 0  
RGB – 149 / 214 / 0  
Website – #99CC00  
HEX – #93D500  
NCS S – 1075-G50Y  
RAL – 6038  
Līmplēve – 517 Light  
Green Avery© 5000

**PANTONE – 389 U**  
CMYK – 33 / 0 / 100 / 0  
RGB – 185 / 219 / 1  
HEX – #B9DB01



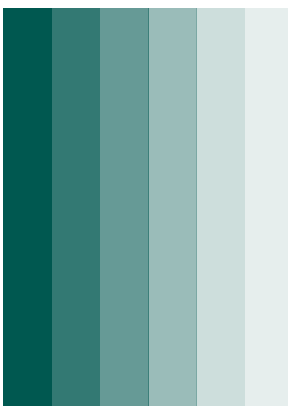
### Lubes pagasts



Lībagi

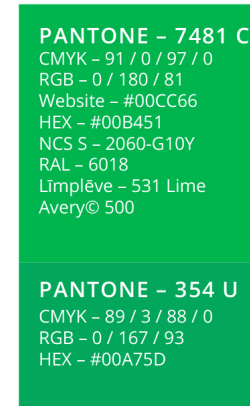
**PANTONE – 3292 C**  
CMYK – 100 / 41 / 67 / 33  
RGB – 0 / 88 / 80  
Website – #006666  
HEX – #005850  
NCS S – 6016  
RAL – 6016  
Līmplēve – 532 Kelly  
Green Avery© 500

**PANTONE – 3292 U**  
CMYK – 81 / 41 / 54 / 19  
RGB – 51 / 108 / 106  
HEX – #336C6A



**PANTONE – 7481 C**  
CMYK – 91 / 0 / 97 / 0  
RGB – 0 / 180 / 81  
Website – #00CC66  
HEX – #00B451  
NCS S – 2060-G10Y  
RAL – 6018  
Līmplēve – 531 Lime  
Avery© 500

**PANTONE – 354 U**  
CMYK – 89 / 3 / 88 / 0  
RGB – 0 / 167 / 93  
HEX – #00A75D

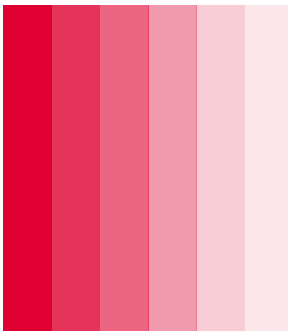


### Lībagu pagasts



Dundaga

**PANTONE – 199 C**  
CMYK – 11/100/91/2  
RGB – 211/32/47

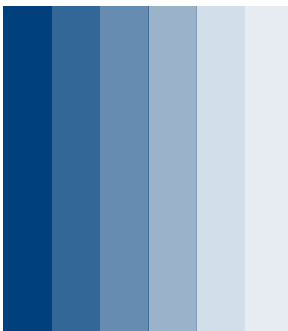


### Dundagas pagasts



Kolka

CMYK – 100/66/0/35  
RGB – 0/65/125

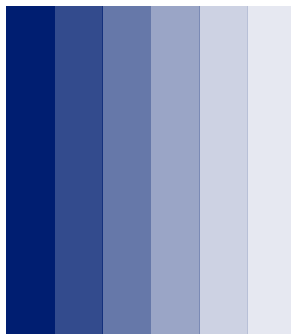


### Kolkas pagasts



Mērsrags

PANTONE – 2747 C  
CMYK – 95/85/40/11  
RGB – 47/64/106

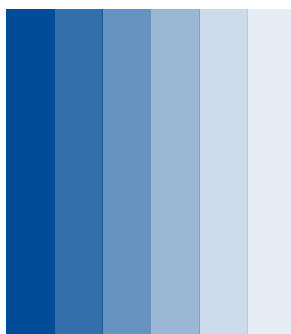


## Mērsraga pagasts



Roja

PANTONE – 2945 C  
CMYK – 94/71/18/4  
RGB – 31/86/143



## Rojas pagasts